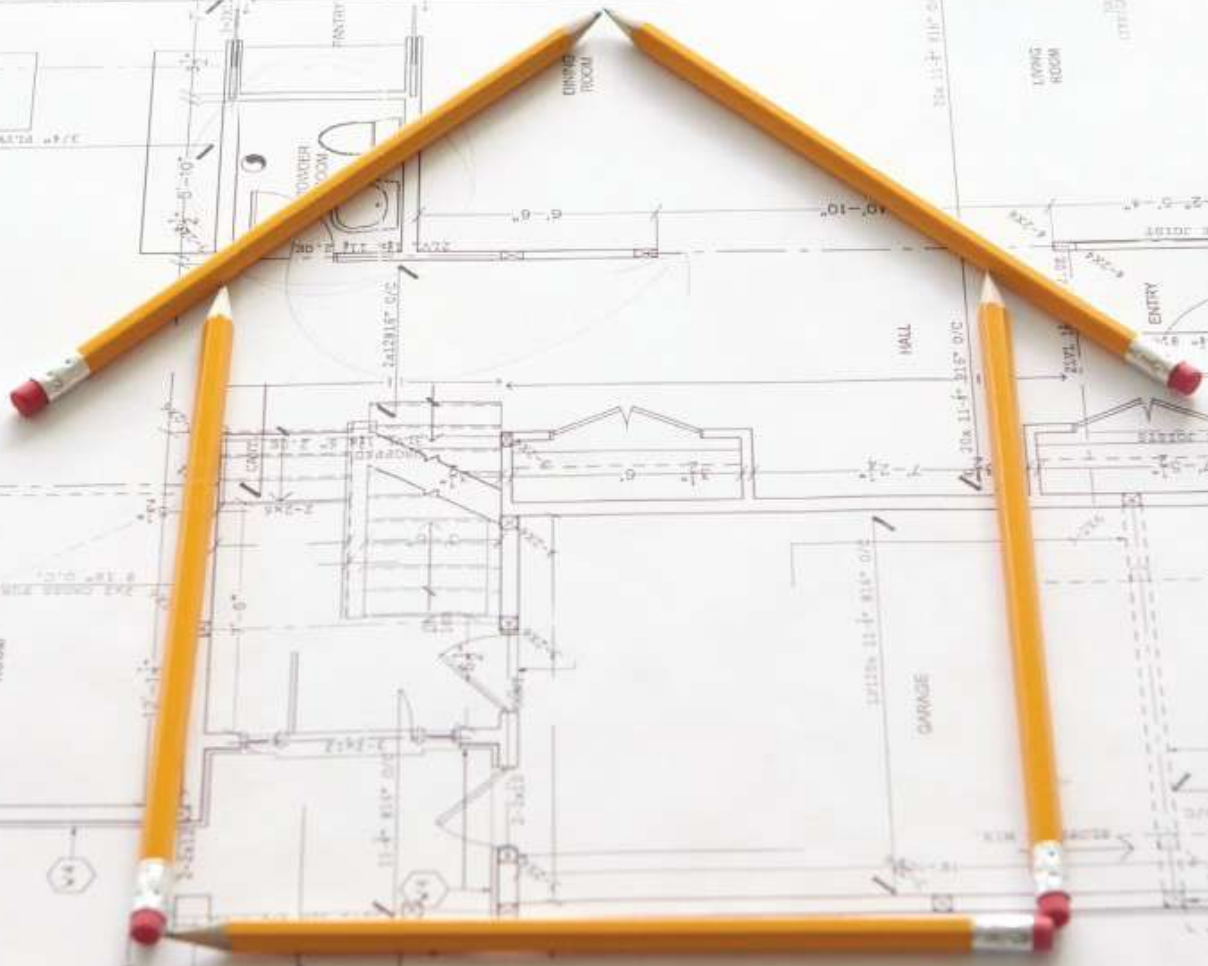


# FUELING AMBITION, BUILDING SUCCESS EMPOWERING YOUR VISION



**birlanu**

**AEROCON**



ECO-FRIENDLY | EFFICIENT TO USE DURABLE | DIMENSIONALLY STABLE  
**Contact : +91 9600969971 / Mail : sales@veltz.in**

BirlaNu Aerocon AAC Blocks crafted from fly ash, cement, lime and an aeration agent, speed installation, cut labour costs and meet IS 2185 Part 3 for sustainable building.

-   
DURABLE
-   
THERMAL INSULATION
-   
SOUND INSULATION
-   
LIGHT WEIGHT
-   
TERMITE RESISTANCE
-   
FIRE RESISTANCE
-   
ECO FRIENDLY
-   
FAST INSTALLATION
-   
UV PROTECTION
-   
PRECISION ENGINEERING



AAC BLOCKS

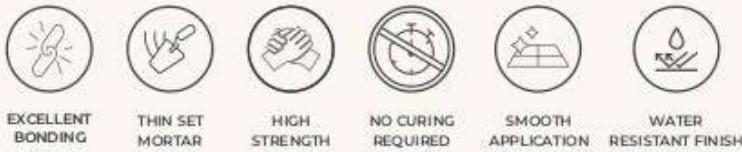
## TECHNICAL SPECIFICATION

Parameter	Unit	Values
Face Size	mm	600X200
Thickness	mm	100/125/150/ 200/230/300
Compressive Strength (Min)	N/mm <sup>2</sup>	≥4
Block Dry Density	Kg/m <sup>2</sup>	551-650
Thermal Conductivity	W/m-K	≤0.24
Sound Reduction	db	37-42
Fire Resistance-load Bearing (200mm Thickness)	Hrs	4
Non Load Bearing (100mm Thickness)	Hrs	4#
Drying Shrinkage	%	≤0.05% for grade 1

## CERTIFICATION



Block jointing mortar is an eco-friendly, high performance solution designed with Superbond technology to deliver exceptional strength, durability and water resistance for block and brick jointing. Ideal for joining AAC blocks, concrete blocks, and fly ash bricks in residential, commercial, and industrial construction, it offers strong and water-resistant joints with a smooth finish.



## TECHNICAL SPECIFICATION

Parameter	Test Standards	Unit	Specification
Sample Type	-	-	Grey Dry Mix powder
Bulk Density	In-house method	Kg/m <sup>3</sup>	1400 ± 200
Water Demand	In-house method	%	30 - Maximum
Pot Life	In-house method	Minutes	> 90
Compressive Strength - 28 Days	EN 1015 - 11	N / mm <sup>2</sup>	8 - Minimum
Flexural Strength - 28 Days	EN 1015 - 11	N / mm <sup>2</sup>	> 3.5
Tensile Adhesion Test - 28 Days	EN 1015 - 12	N / mm <sup>2</sup>	> 0.5
Workability	In-house method	-	Good

## CERTIFICATION



# birlanu

**AEROCON** | **READY MIX PLASTER**

The perfect solution for both interior and exterior walls, offering unmatched convenience and a flawless finish. Whether you're sprucing up interior or strengthening exteriors, our ready-mix plaster ensures smooth application, durability, and a superior finish every time, saving you time and effort while delivering professional results. Ideal for creating stunning, long-lasting walls that stand the test of time.



EXCELLENT ADHESION



HIGH DURABILITY



SMOOTH FINISH



CRACK RESISTANT

READY MIX PLASTER (RMP)

S. No	Parameter	Test Method	BirlaNu Specification	UOM	Typical Results
1	Sample Type	Visual	Gery Dry Mix Power	-	Grey Dry Mix powder
2	Bulk Density	In-house method	1700 ± 200	Kg/m <sup>3</sup>	1515
3	Water demand		25 - Maximum	%	18
4	Pot life		> 90	Minutes	150
5	Compressive strength - 28 Days	EN 1015 - 11 1999	≥ 6	N/mm <sup>2</sup>	11.0
6	Flexural strength 28 Days		> 1.8	N/mm <sup>2</sup>	3.0
7	Tensile adhesion test - 28 Days	EN 1015 - 12 2000	> 0.3	N/mm <sup>2</sup>	0.45

## OTHER BRANDS FROM BIRLANU

**birlanu**  
LEAKPROOF PIPES

**birlanu**  
TRUCOLOUR PUTTY

**birlanu**  
CONSTRUCTION CHEMICALS

**CHARMINAR**  
birlanu

**PARADOR**  
birlanu

**Contact :**

Veltz Infra

Ph: +91- **9600969971**

Mail : [sales@veltz.in](mailto:sales@veltz.in) / web : [www.veltz.in](http://www.veltz.in)

